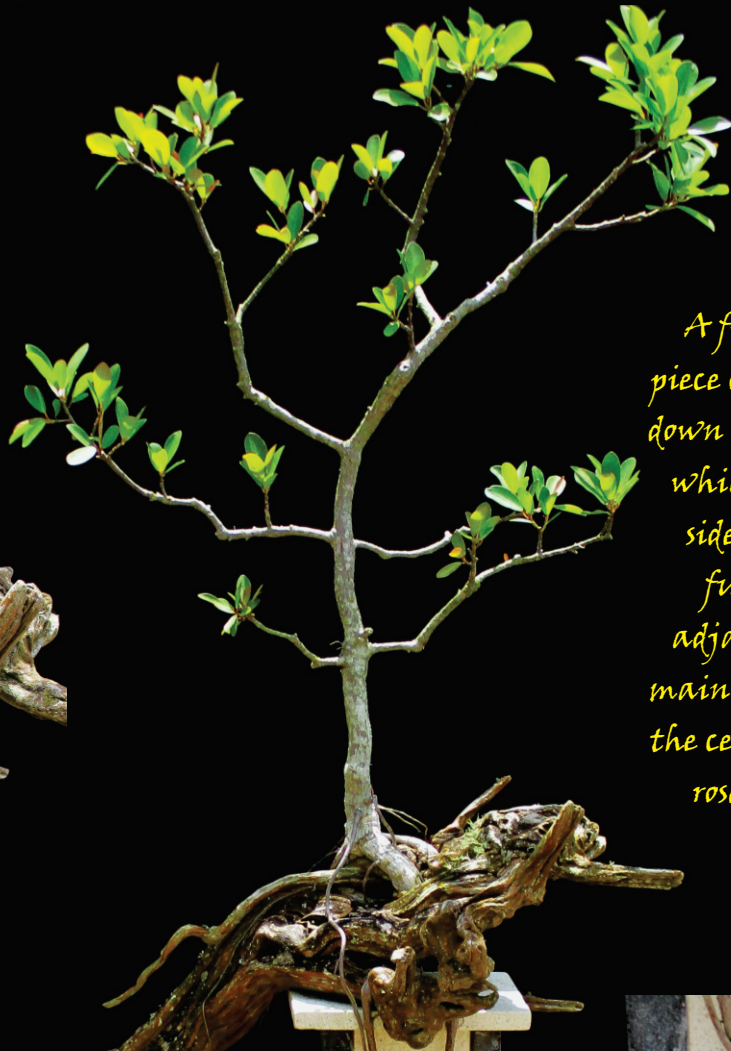


*A decorative fig
with side stand
and rose quartz
base*

*A fig grown over a
piece of drift wood then
down into a quartz box
whilst allowing the
side roots to extend
further into an
adjacent basin. The
main roots then existed
the central tube into a
rose quartz basin
below.*



A decorative fig grown over a piece of drift wood while allowing the roots to extend down into a side bowl and also into the rose quartz base

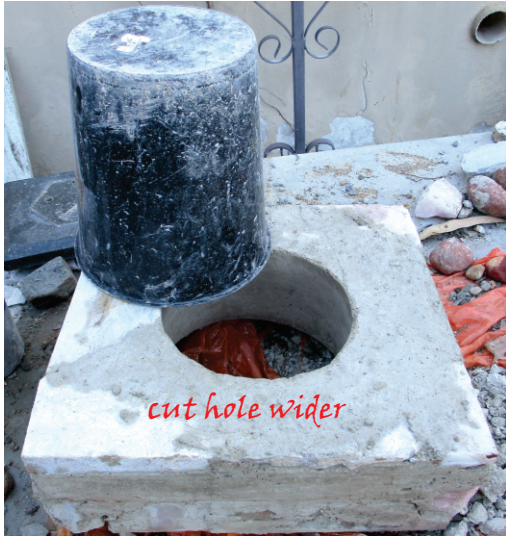


Initially we grew a fig from a cutting which took us approximately 4-5 years to get to this stage. Initially we grew it into a solid quartz box and once the roots had extended far enough down to grown into soil at the base we started cutting the face open to expose the root system. Those roots hanging off the side we allowed to grow into a basin we made (detailed here). The rose quartz stand for the pillar (process also shown here) we hollowed out underneath and made a fiberglass lid to retain the soil.

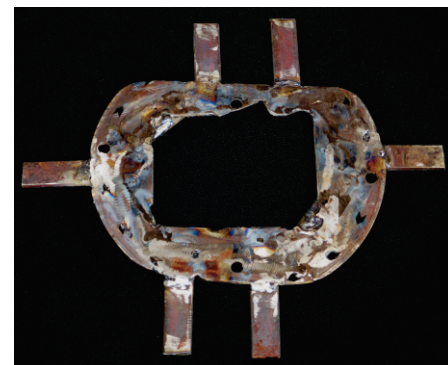
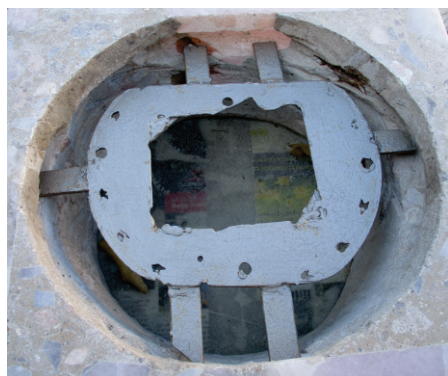


More detailed videos under the video link section of www.uniquelyrock.co.za

The making of the quartz base



In order to create the polished quartz stand we used a wooden box (which we oiled the sides to prevent the cement sticking) then plastered slices of rock around the side and poured in cement. A plastic bucket was used to create the space in the centre which we widened with an angle grinder (above). The cracks were filled with granite glue mixed with quartz dust and then polished smooth



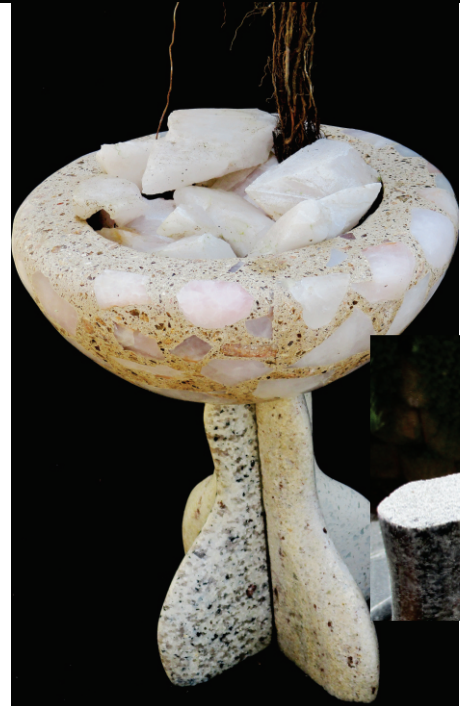
Above- the underside of the base which was hollowed out and a fiberglass cover made which we siliconed into place.

This metal insert -left- for the pillar to sit and bolt onto, we used an old cutting blade which we cut a centre hole in for the roots to grow through and welded on a few side lengths to attach to the insides.

The fabrication of the side bowl and legs



The side bowl for the external roots to grow down into we used a plastic bowl as a mould into which we poured cement and stone chips on the side. The initial hole (before widening with an angle grinder) we created by inserting another plastic container within the outer one. When dry we removed the plastic, filled any holes and cracks and polished/ground the solid bowl smooth



The legs we cut from off cuts of kitchen counter granite and glued together with small metal inserts (biscuit joints) with a pin protruding out the top (right) for the bowl to recess into which also provided a drain hole for the water to exit



More detailed videos under the video link section of www.uniquelyrock.co.za



DIY ideas for your home and garden
helping you achieve your dream

available as a download or on CD
e mail us for details